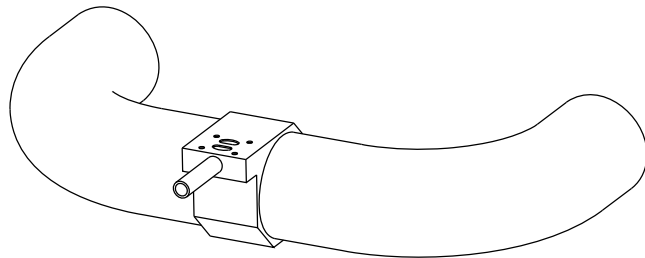
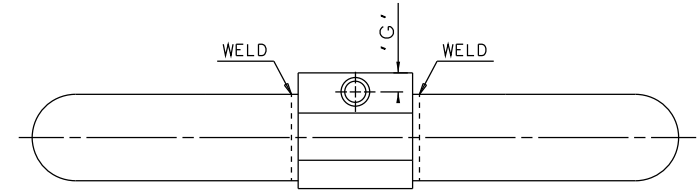
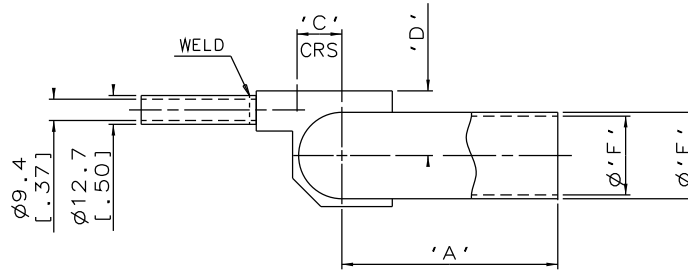
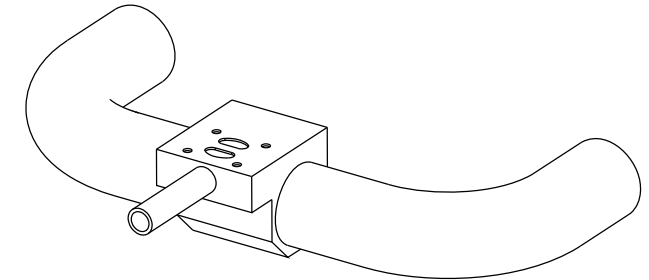
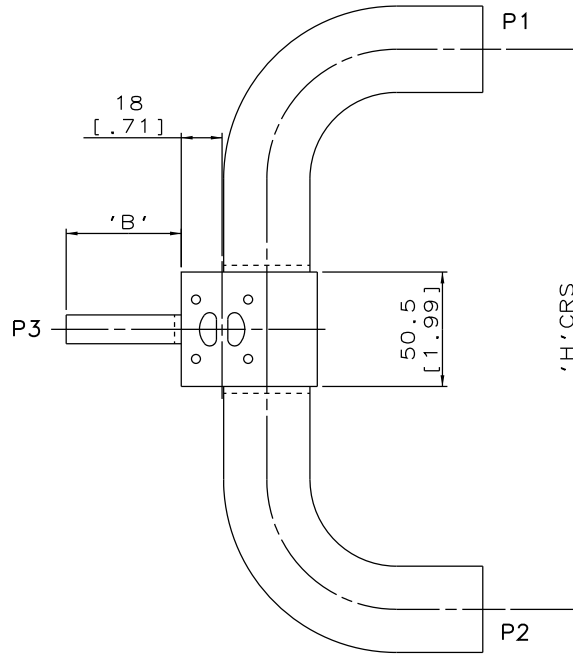


DN15/0.50  
MAINLINE ONLY



DN80/3.00 TO DN100/4.00  
MAINLINE ONLY



DN20/0.75 TO DN65/2.50  
MAINLINE ONLY

The information on this sheet is Private and Confidential and is the property of Crane Process Flow Technologies Limited and must not be published directly or indirectly in any manner whatsoever without the written permission of the Company and must not be used in any way detrimental to their interests.  
© Crane Process Flow Technologies

**CRANE** Process Flow Technologies  
A Crane Co. Company

**Saunders**  
The Science Inside

Title  
SCHEDULE OF LEADING DIMENSIONS FOR  
DN8/0.25 WEIR POINT OF USE 'T' BODY WITH  
DN15/0.5 BRANCH AND BUTT WELD OD TUBE ENDS

Drawn R1 Date 29.09.11

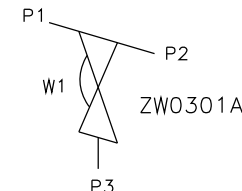
UNCONTROLLED IN  
HARD COPY FORMAT

Checked RND Date 08.03.12

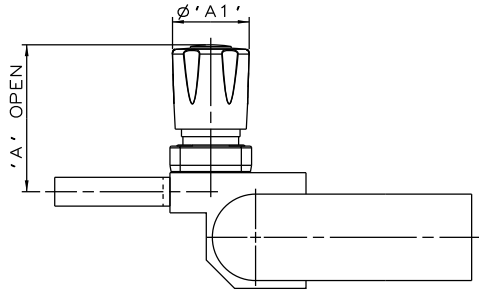
First Angle Projection Method E

Drawing No. WEB-032 Issue. 2

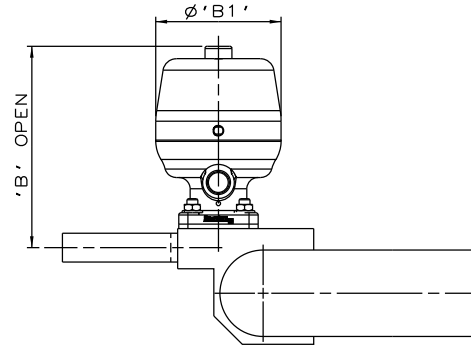
MAINLINE SIZE		A		B		C		D		ØE		ØF		G		H		BODY WEIGHT
mm	inch	mm	inch	mm	inch	mm	inch	mm	inch	mm	inch	mm	inch	mm	inch	mm	inch	Kgs
DN15	0.50	76.2	3.00	50.8	2.00	7.2	0.28	16.5	0.65	12.7	0.50	9.4	0.37	8.4	0.33	208.9	8.22	0.5
DN20	0.75	76.2	3.00	50.8	2.00	10.2	0.40	21.0	0.83	19.05	0.75	15.75	0.62	8.4	0.33	208.9	8.22	0.6
DN25	1.00	76.2	3.00	50.8	2.00	13.4	0.53	24.0	0.94	25.4	1.00	22.1	0.87	9.4	0.37	208.9	8.22	0.8
DN40	1.50	95.3	3.75	50.8	2.00	19.7	0.78	29.0	1.14	38.1	1.50	34.8	1.37	8.4	0.33	247.1	9.73	1.1
DN50	2.00	120.7	4.75	50.8	2.00	26.8	1.06	32.0	1.26	50.8	2.00	47.5	1.87	9.4	0.37	297.9	11.73	1.9
DN65	2.50	139.8	5.50	50.8	2.00	32.6	1.28	36.0	1.42	63.5	2.50	60.2	2.37	8.4	0.33	336.1	13.23	2.1
DN80	3.00	158.8	6.25	50.8	2.00	38.8	1.53	40.0	1.57	76.2	3.00	72.9	2.87	8.4	0.33	388.1	15.28	2.4
DN100	4.00	203.2	8.00	50.8	2.00	51.3	2.02	53.8	2.12	101.6	4.00	97.38	3.84	8.4	0.33	476.9	18.78	4.8



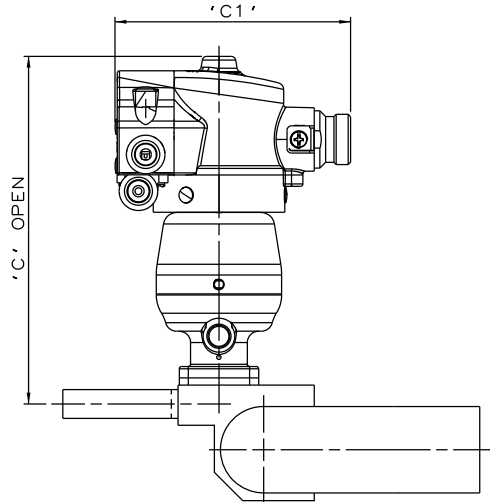
ORIENTATION AS  
PER P&ID DIAGRAM  
FOR OPTIMUM  
DRAINABILITY.



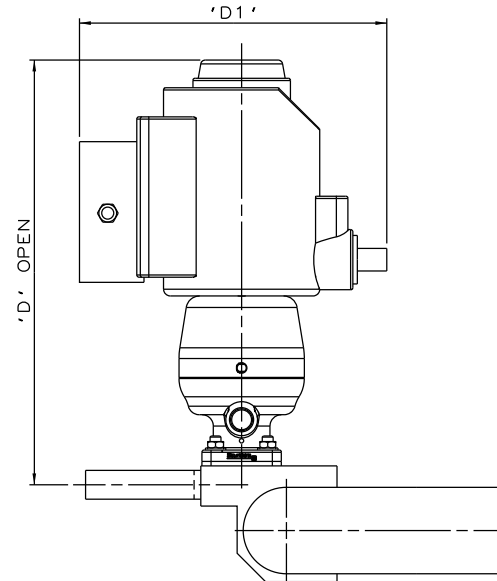
PURE PERFORMANCE  
BONNET ASSEMBLY



\*S360 ACTUATOR



\*S360 ACTUATOR  
WITH M-VUE SENSOR



\*S360 ACTUATOR  
WITH I-VUE SENSOR

The information on this sheet is Private and Confidential and is the property of Crane Process Flow Technologies Limited and must not be published directly or indirectly in any manner whatsoever without the written permission of the Company and must not be used in any way detrimental to their interests.  
© Crane Process Flow Technologies

**CRANE** Process Flow Technologies  
A Crane Co. Company

**Saunders**  
The Science Inside

Title  
SCHEDULE OF LEADING DIMENSIONS FOR DN8/0.25 WEIR  
'T' BODY (DN15/0.75 BRANCH) WITH BUTT WELD OD TUBE ENDS.  
FITTED WITH TOPWORKS OPTIONS

Drawn R1	Date 28.06.16	UNCONTROLLED IN HARD COPY FORMAT	
Checked RND	Date 28.06.16		
First Angle Projection Method E	DO NOT SCALE	Drawing No. WEB-032-ASSY	Issue. 1

\* DIMENSIONS SHOW MAXIMUM ENVELOPE FOR ALL MODES

BRANCH SIZE		A		A1		B		B1		C		C1		D		D1	
mm	inch	mm	inch	mm	inch	mm	inch	mm	inch	mm	inch	mm	inch	mm	inch	mm	inch
DN15	0.50	65.8	2.59	34.0	1.34	89.4	3.52	55.0	2.18	154.4	6.08	103.8	4.09	188.4	7.42	71.5	2.81